



City of Springfield, MO City Manager

Exceptional Talent. Total Confidence.®



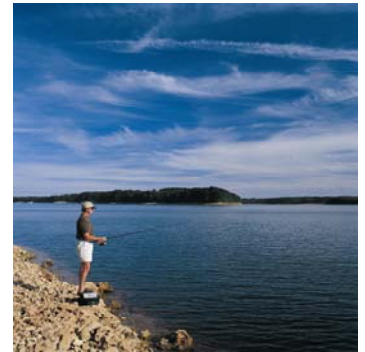


Springfield is the third-largest city in Missouri and is located in Greene County. According to the 2004 census, population within the city limits is 150,704. The estimated Metropolitan Statistical Area is approximately 390,986 square miles. "Tennessee Homesteader John Campbell was the founder of Springfield, announcing his claim in 1829." Springfield's slogan boasts, "Everywhere Should Be Like This." Springfield offers a strong job market, great schools, superior health care, abundant outdoor and recreational opportunities, delightful entertainment, beautiful neighborhoods and a temperate climate with best of all four seasons.

Springfield's vibrant downtown has truly become the hub of the metro area. Major new construction in center city has revolved around Jordan Valley Park, with its hills, fountains and adjacent ice arena. Hammons Field, a multi-million dollar baseball park, opened in 2004. Visitors and residents of Springfield can enjoy fine dining, night clubs and art galleries, and they can literally "experience the world," considering the city's arts community as the catalyst featuring more than 20 downtown galleries and specialty shops.

With a strong public school district, well-supported private schools and nationally recognized colleges and universities, Springfield's outstanding education system fuels business growth and prepares students for the competitive workforce. Springfield schools are focused on student achievement, committed to basics and rooted in traditional values. Springfield is a top center for higher education in Missouri, offering a wealth of liberal arts, business, technical, and medical programming. Curricula in pre-engineering, pre-medical, pre-law, architecture, and religion are also offered. Non-credit, continuing education courses are also available, as well as customized training programs. Approximately 24,000 students attend the Springfield R-12 School District. Nearly 21,000 students attend Missouri State University, 8,500 students attend Ozarks Technical Community College, 4,600 students attend Drury University and 1,800 students attend Evangel University.

More than 7,500 miles of shoreline, along accessible lakes and floatable streams and rivers, are within a 100-mile radius of the city. Excellent hunting, camping and fishing are found throughout the area. Nestled in the Ozark Mountains and surrounded by natural beauty, Springfield is beloved by outdoor enthusiasts. Freshwater lakes make the area a fisherman's paradise. The city is home to the world's largest sporting good stores, Bass Pro Shops Outdoor World, and its residents take sports and leisure seriously. There's plenty for participants and spectators alike. From professional golf, tennis and baseball to nationally recognized collegiate athletics, Springfield sports pack plenty of thrills. Residents are always sure to take time out for fun.



Springfield and Greene County are home to more than 50 beautiful public parks, eight community centers, numerous playgrounds, seven public swimming pools, many indoor and outdoor tennis courts, four municipal golf courses, farm and equestrian facilities and Jordan Valley Park's public ice skating rink.



Springfield's economy is based on health care, manufacturing, retail, education and tourism. The city is within 100 miles of six recreational lakes. Table Rock Lake and the Branson entertainment area are within 45 miles of the city. More than 11,940 businesses are licensed in Springfield. According to the U.S. Conference of Mayors, the city's gross metro product was \$11.8 billion in 2003. The American Chamber of Commerce Research Association Cost of Living Index rates Springfield well below the national average. In 2005, the average index was 88.4 percent compared to the national average of 100 percent.

Springfield enjoys a mild climate with four distinct seasons. Historically, Springfield's coldest month is January when the average temperature overnight is 21.8°F. In July, the warmest month, the average day time temperature rises to 89.9°F. The driest month in Springfield is January with 2.11 inches of precipitation, and with 5.02 inches of precipitation, June is the wettest month.

Founded in 1829
City Incorporated in 1838
Population: 150,298
Total number of full time employees: 1,670
Total budget for all funds: \$255,122,000
Total operating funds, Parks, Health and Transportation: \$100,836,000
Total general fund: \$74,767,324



Honors and Distinctions

- The past several years Expansion Management Magazine has rated Springfield as "Blue Ribbon Educational System" in its Education Quotient study
- Top 10 Places to Live and Work (Employment Review)
- Top 10 Hot City for Entrepreneurs (Entrepreneur Magazine)
- Top 12 Metros for Recruitment & Attraction (Expansion Management)
- Top 20 Mid-Sized City for Entrepreneurs (Inc. Magazine)
- Top 25 Best Places in the U.S. (Forbes Magazine)
- Top 50 Best Performing City (Milken Institute)
- 100 Best Community for Young People (America's Promise)
- 5-Star Quality of Life (Expansion Management Magazine)
- Top 50 Adventure Towns (National Geographic Adventure Magazine)
- Sports Illustrated 50 Sportstown USA's

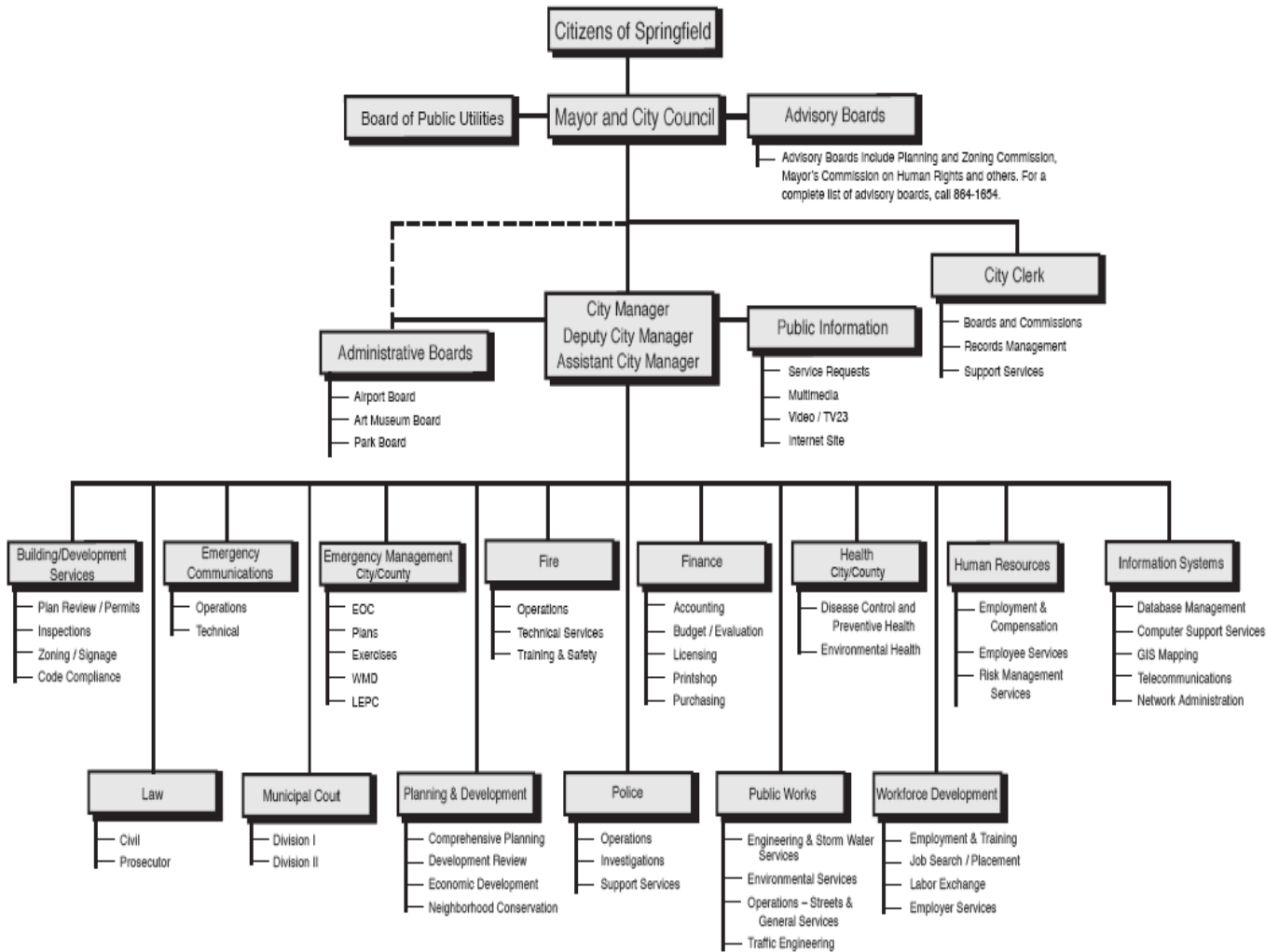
The Mission



The people of our community are the only reason we are here. Therefore, we are committed to working with the community to provide ethical and responsible local government so that everyone can enjoy the benefits of living and working in Springfield. We will achieve this through: Integrity and pride of service in everything we say and do, and with dedication to quality; cooperation and communication with one another and with citizens to ensure open government; and open management with no surprises; continuous improvement of services through cost-effective utilization of people, materials, equipment and technology; leadership and knowledge through staff training and development; and innovation in how we meet present and future needs of our city.

Organizational Chart

Springfield City government is based on the Council/Manager system. By Charter, the City has eight Council members who are each elected for a four-year term on a non-partisan basis, and a Mayor who is elected for a two-year term. The City Manager is appointed by Council to be the chief executive and administrative officer of the City. The Mayor of Springfield is Thomas J. Carlson who has served in that capacity from 1987 – 1993 and currently since 2001.



Note: All Departments include an administrative section.
Updated 8/14/07 by the Department of Public Information.

Under the administrative direction of the City Council, the City Manager will provide supervision and general direction to the City's Management Team including the Deputy and Assistant City Managers, department heads, Executive Assistant, and other assigned positions.

The essential functions of the City Manager:

- Serves as the Chief Executive Officer of the City and is responsible to the City Council for the proper administration of all of the City's affairs.
- Demonstrates the knowledge of Public policy issues; intergovernmental relations; municipal financial management and fiscal policies.
- Prepares and submits the City budget annually to the Council and is responsible for its administration after adoption.
- Keeps the Council advised of the financial condition of the City and makes recommendations concerning its future needs.
- Responsible for the direction and oversight of the City negotiation process for labor management relations.
- Effectively leads and manages city government.
- Shapes and implements policy review.
- Reviews and analyzes a wide variety of information and delivers effective presentations.
- Communicates effectively both verbally and in writing with all levels of city staff, city officials and citizens.
- Manages, organizes and directs the work of others and provides organizational leadership.
- Deals effectively and courteously with city officials, city staff, and the general public; performs the essential functions of the job without posing a direct threat to the health and safety of others.
- Performs effectively as a member of the City Management Team in carrying out the City's stated mission and philosophy.
- Tours facilities, attends grand openings, and participates in other public meetings and gatherings.
- Performs such other duties as may be prescribed by the City Charter or required of the City Manager by the City Council not inconsistent with the City Charter.

Interested candidates should possess a Bachelor's degree in Public Administration, Business Administration or related discipline from an accredited college or university. Possession of an MBA or Master's Degree in Public Administration, or related field is preferred. Ten years of municipal experience, with prior service as a City Manager, Assistant/Deputy City Manager or the equivalent in a comparable or larger community. Certification as an ICMA Credentialed Manager within 12 months of appointment is preferred.

The ideal candidate will have superior leadership skills and documented success creating and implementing a city-wide strategic plan. He/she will be innovative and creative and be a champion of new initiatives while serving the City of Springfield. He/she should possess a record of accomplishment and success with redevelopment projects and a clear understanding of issues surrounding union and pension plans. The candidate's background and experience should include exposure to a conservative environment with strong community involvement. This individual should be politically savvy and have the capacity to understand municipal issues on a technical level and convey them to laypersons in a concise, articulate manner. The City Manager should have demonstrated experience managing operations by directing and coordinating activities consistent with established goals, objectives and policies. He/she should also share a genuine interest in the growth of the community.

The Ideal Candidate – ctd.

The City Manager must have the capacity and interest to be an effective mentor and leader for staff. He/she will have strong negotiation skills and the ability to make firm recommendations and decisions based on professional judgment, employee input, and experience without retreating under political or public pressure. The City Council will rely heavily on the expertise, judgment and recommendations of the City Manager; therefore, this individual should have the ability to effectively delegate authority and responsibility while maintaining appropriate levels of operational control. The candidate must exhibit strong coordination and relationship-building skills in working with the entire organization. He/she must set a positive example of competence, professionalism, energy and work ethic to the organization and community. The City Manager will have the ability to say “no,” when necessary and a willingness to maintain a high degree of visibility in the community, both on and off the job. This is a key position within the City government environment and it is essential for the successful candidate to work closely with the City Council in carrying out city-wide initiatives and setting the tone and vision for the employees of the city.

Salary

Springfield is offering a competitive salary commensurate with experience. A comprehensive benefits package is also offered. Relocation assistance may be offered for the successful candidate if he/she lives outside of the area.

How to Apply

Interested applicants should forward a transmittal letter of interest and a resume to:

Arcus Public
600 North 2nd Street, Suite 100
Harrisburg, PA 17101
877.570.8040

E-mail:
resume.public@arcus.net
Subject: CM - Springfield

